



THE COMPOSITE EXPERT...

[www.aeroncomposite.com](http://www.aeroncomposite.com)

STRUCTURE  
LIFE MORE THAN  
**25 YEARS**

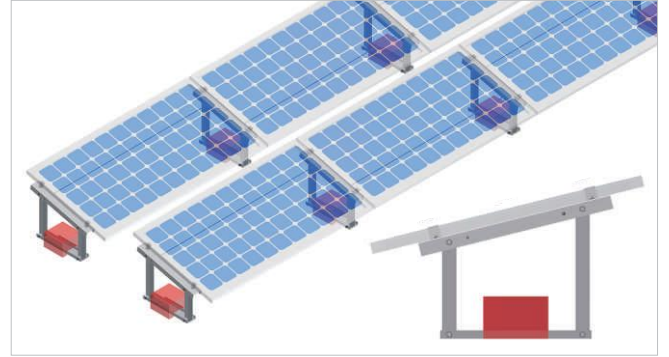
**FRP/GRP MODULE MOUNTING STRUCTURE FOR SOLAR PANELS**



# ROOF TOP SOLUTIONS

## Shallow/Low elevated mounting for Flat Roof

This is a low lying structure and hence the wind loads are dramatically lesser compared to an elevated structure. A wind shield can also be provided which enables aerodynamic design capable of taking wind loads of 180 Kmph. Since it is a modular structure & compatible for any module type, Installation involves only nut and bolt mechanism and can be done by unskilled personnel also. It's a non-penetrative rooftop solution. A concrete ballast is provided for counter weight. Casting the concrete blocks is the only in-site work which needs be done, which is very minimal and not at all labour intensive. There are no point loads acting on the roof and hence no need to compromise with the structural integrity of the existing building roof unlike the penetrative structures. A Rubber/ Foam sheet can be provided to give enough friction between roof and the structure.

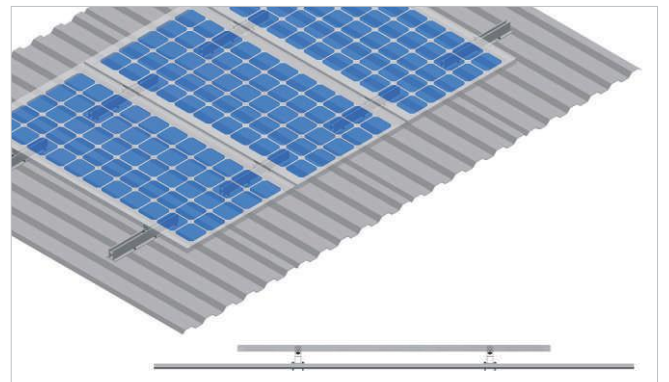


## Regular/Elevated Mounting for Flat Roof

Roofs where obstacles are present and shallow structure are non-usable then elevated structures are used. It can be elevated to a height of 1000mm and can provide maximum energy output. Light weight high strength material used for structure components. Option is provided for anchor structure and non-penetrative structure. Industry grade resin is used for fixing concrete ballasts to the roof. The structure is designed to take wind loads upto 180kmph and it is Compatible for any module type.

## Slanted Metal Roof Sheets

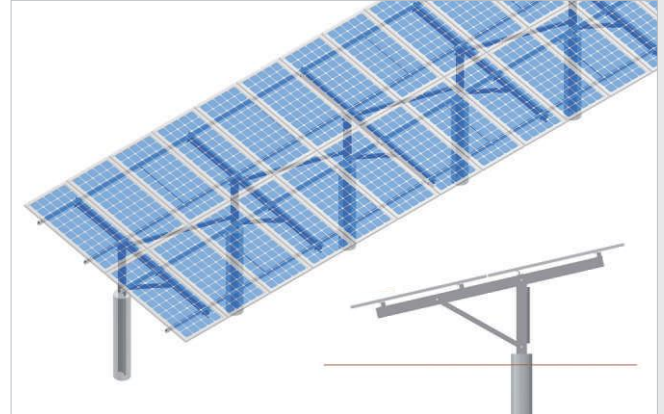
Maintenance free structure is designed in a way that the existing structure's service period is not jeopardized due to loading on the roof. Innovative connecting mechanism is used to enable faster installation which can withstand heavy wind load. Also it is Compatible to mount any module type. Non penetrative option is also available for any trapezoidal roof profile and for any inclination of the roofs.



# GROUND MOUNTED SOLUTIONS

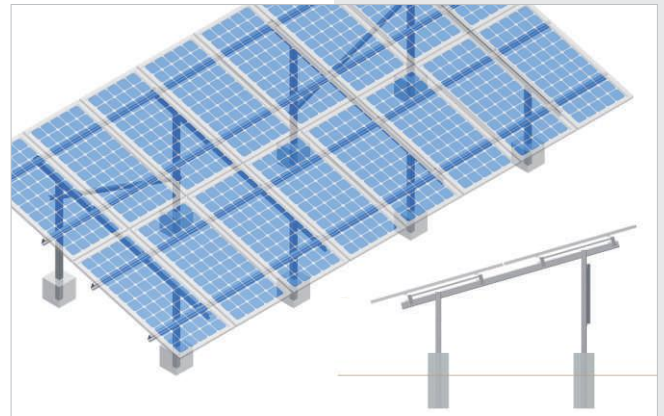
## Single Post Installation

AERON strives to provide optimized construction, minimal assembly parts, innovative design ideas and on-site flexibility for quick and cost-effective installations. It is manufactured using easy manufacturing process with dedicated assembly lines and teams. Designed to withstand high wind speed and rain loads. Engineering analysis can be provided for wind load. Due to simple design there is no requirement of earth levelling work even if the terrain is uneven. Optimized designs ensures significant savings on time and money. AERON offers comprehensive technical support and On-site installation supervision for projects.



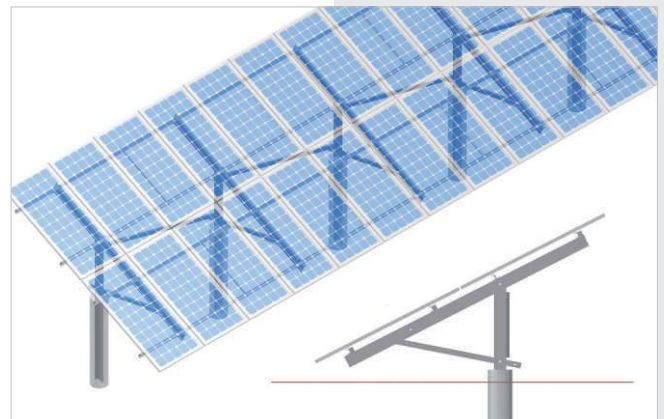
## Dual Post Installation

This orthodox design is very stable and size of the structural member is also optimised keeping cost in mind. Installation is very easy and can be done at the rate of 1 MW / day due to light weight structure. Designed to withstand high wind speed and rain loads. Engineering analysis can be provided for wind load. Our solution is suitable for virtually all terrains and site conditions. Our ground mount system, scalable for large, medium and small applications. Fiberglass material provides maximum strength-to-weight ratio and constructed of optimized material for maximum strength and durability. Our experienced team will help design and optimize your system for maximum return on investment.



## Seasonal Tilt

Now, Outputs for power plants in South India on par with power plants in North India at the same price / kwh. This is how Seasonal tilt design help. As a package of optimized solution for project specific customization, we deliver product in which no field cutting / welding is required. Our material is suitable for weather extremities -40 deg c to + 60 deg C with UV protection. Structure is highly durable and corrosion resistant as it is not metallic. No recurring expense is projected for MMS. Typical elevation angle is 10 degrees to 40 degrees. Easy to tilt mechanism to reduce operational expenses.



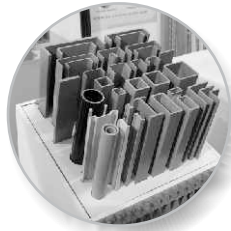
## Other Installations :

» Carport Solar Installations | » Floating Solar Installations





**Fiberglass Cable Tray**



**Fiberglass Structural Profiles**



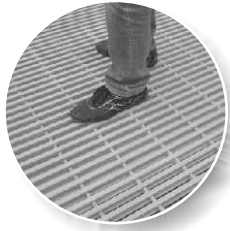
**Fiberglass Ladder**



**Trefoil Clamp**



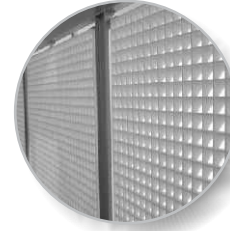
**Fiberglass Handrails**



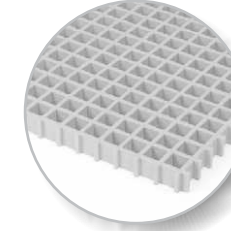
**Fiberglass Pultruded Gratings**



**Fiberglass Canopy**



**Fiberglass Fencing**



**Fiberglass Molded Gratings**



**Fiberglass Poles & Mast**



THE COMPOSITE EXPERT...

**AERON COMPOSITE PVT. LTD.**

Reg. Off.: Block No. 496/P, Tajpur Road, Sarkhej Bawala Highway,  
Changodar - 382213 Tal. Sanand, Ahmedabad, Gujarat - INDIA.  
T : +91 79 6525 8500 | F : +91 79 26561238 | M : +91 99099 88266  
E : [info@aeroncomposite.com](mailto:info@aeroncomposite.com) | W : [www.aeroncomposite.com](http://www.aeroncomposite.com)



Scan to Save

